



Excellence
in changing
patient's lives
for the better



ROTHSCHILD FOUNDATION
HOSPITAL
HEAD AND NECK EXPERTISE



Rothschild Foundation Hospital

Created in 1905 in the 19th district of Paris, the Adolphe de Rothschild Foundation Hospital is a private health institution of collective interest (ESPIC) specialized in all pathologies of the head and neck for adults and children. This university hospital offers excellent care at a conventional rate (non-profit) and treats nearly 300,000 patients every year. Providing the continuum of care, research and training, the Rothschild Foundation Hospital pilots 125 clinical research studies each year, publishes nearly 300 scientific articles and trains nearly 700 students. The services of the Rothschild Foundation Hospital regularly appear at the top of the rankings of the best French hospitals. The Rothschild Foundation Hospital has obtained the highest level of certification, with no obligation or recommendation for improvement from the High Authority of Health.

FIGURES 2020



261,078
patients seen in consultation



14,961
surgical interventions



10,116
day hospital stays
(medicine)



10,117
outpatient stays
(surgery)



46,007
visits to eye
emergencies



188 research projects
and 363 publications



1,428 employees
(including 317 doctors)



147,9 €
operating budget



The Rothschild Foundation Hospital is a member of the Edmond de Rothschild Foundations philanthropic network.

INNOVATIONS AND AREAS OF EXCELLENCE

1st French hospital for **corneal transplants**

Expertise center in Ile-de-France for the screening and management of **retinopathy in premature infants**

1st worldwide **artificial retinal implantation** of AMD patients

Largest French center for intravitreal injections (IVT) in the treatment of **AMD**

The only Ile-de-France hospital to provide 24-hour **pediatric ophthalmological emergency care**

1st French hospital opening **access to health care in ophthalmology** (PASS-O) for people in precarious situations

European leader in the treatment of **stroke** by mechanical thrombectomy

1st hospital in Ile-de-France for the treatment of **cerebral aneurysms**

Major expertise in the management of **dystonia** and abnormal movements of the ENT sphere by botulinum toxin injections

Ile-de-France leader in deep brain stimulation for **Parkinson's** and **dystonia** (children and adults)

One of the 3 Multiple **Sclerosis** Resource and Competence **Centers** in Paris

1st French hospital specializing in the surgical treatment of **infants and children with drug-resistant epilepsy**

The only research unit, in France, to provide consultations for the diagnosis, treatment and follow-up of **neuro-visual disorders**



A range of specialized head and neck care services

OPHTHALMOLOGY

Management of all adult and child eye diseases and surgeries: AMD, cataract, glaucoma, retinal, corneal and conjunctival diseases, eye inflammation.

133,400 consultations

12,400 séjours hospitaliers

ENT

Surgical and medical management of disorders of the sphere ENT (Ear, Nose and Throat): surgery of the base of the skull, sinuses, ears; oncology; hearing and voice disorders; tinnitus, vertigo, sleep disorders, oral surgery and dental implantology.

18,600 consultations

2,900 stays

RARE DISEASES



- **European Reference Network for Rare Diseases and Cancers**
 - Constitutive site of the "Paed-Can" network for rare pediatric cancers in collaboration with the Institut Curie
- **Rare Diseases Reference Centre (coordinating site)**
 - Wilson's disease and other rare copper-related diseases
- **Rare Disease Reference Centers (constitutive site and associated site)**
 - Rare neuroretina diseases
 - Cerebral and spinal arteriovenous malformations
 - Rare epilepsy
- **Rare Diseases Competence Centers**
 - Rare conditions in ophthalmological genetics
 - Rare diseases in pediatric ophthalmology
 - Keratoconus
 - Neurogenetic diseases and abnormal movements
 - Rare diseases with psychiatric expression
 - Rare systemic autoimmune diseases

EMERGENCY SERVICE 24/7

- **Ophthalmology** (adult and child)
- **Neuroscience** (stroke, aneurysm rupture)

IMAGING FACILITY

4 MRIs (including 1 dedicated to research), 1 scanner, 1 Cone Beam, 3 ultrasound scanners.



ROTHSCHILD FOUNDATION HOSPITAL
HEAD AND NECK EXPERTISE

INTERNAL MEDICINE

Management of patients with diabetes, endocrine disorders, spinal disorders or chronic inflammatory rheumatism...

3,700 consultations

1,000 stays

NEUROSCIENCES

Neurology

Treatment of central and peripheral nervous system diseases (such as Multiple Sclerosis, Parkinson's, Alzheimer's), management of strokes (stroke) and neuro-visual and cognitive disorders...

Interventional neuroradiology (INR) adult and child

Treatment of vascular malformations of the brain (aneurysms), spinal cord and stroke, Galen vein, retinoblastoma...

Adult and child neurosurgery

- Management of intracranial pathologies, spine, abnormal movements, Parkinson's disease.
- Treatment of resistant pain in a dedicated medical and surgical center.
- Management of rebellious epilepsy, severe dystonia, cancer, endocrinology.

28,000 neurological consultations

1,200 Supported Stroke

RESUSCITATION

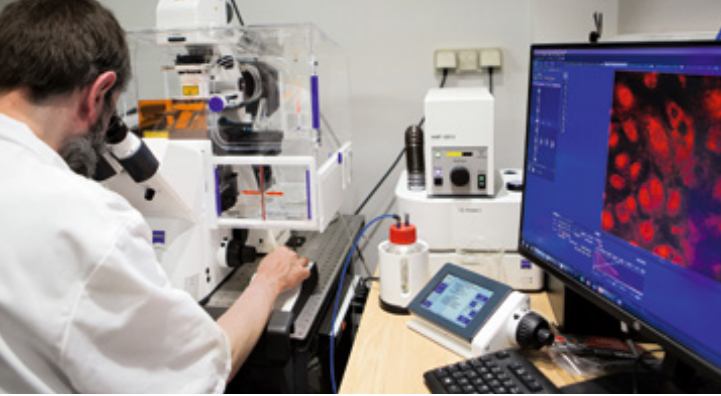
Resuscitative management of patients with impaired vital function. This service includes a multi-organ and tissue removal team (PMOT).

7,000 resuscitation days

ANESTHESIA

Anesthetic management in pre, per and postoperative care for adult and pediatric hospitalized patients.

11,500 consultations



Leading edge research, technological innovation and expertise training for head and neck diseases management

RESEARCH

The Rothschild Foundation Hospital carries out extensive research activities based on a dedicated support service, accredited Clinical Research and Innovation Delegation (DRCI) in 2016 by the French Ministry of Health.

- **The only private Parisian** hospital to have an MRI exclusively dedicated to research.
- **2nd rank among Paris Region hospitals** for promotion and investigation activities.
- Member of **the sole nationally recognized university hospital department in ophthalmology.**

- **Cellular therapy:** translational research laboratory in ophthalmology.
- Co-winner 2019 of the **national University Hospital Research (RHU)** program on 2 topics:
 - Emergency stroke management (BOOSTER project),
 - Diabetic retinopathy management (EVIREED project).

4,700 patients per year participate in clinical studies

TECHNOLOGICAL INNOVATION AND VALORISATION

Advances in brain imaging, genomics, robotic surgery and the emergence of artificial intelligence in health have opened up unexplored avenues of treatment. The Rothschild Foundation Hospital is fully involved in this by capitalizing on its **medical hyper specialization**, state-of-the-art **clinical research** and investing in the **latest equipment:** MRI, mobile block scanner, Rosa surgical robot...

Under the brand **“Rothschild Medical Development”**, the hospital supports new projects: start-ups, search for funding and partnerships...



15,000,000 €
investment budget



INITIAL AND CONTINUING TRAINING

- **University teaching:** with a university hospital association agreement with the University of Paris, the Rothschild Foundation Hospital participates each year in the initial training of nearly 150 interns and many medical and surgical student staff.
- **Continuing education** open to health professionals: 12 training programs eligible for CPD (Continuing Professional Development).
- **Other continuing training programs:** e-learning platform, simulation training, training of foreign practitioners, workshops...



790
students trained per year



Shared expertise in France and abroad

AN EXCELLENCE CENTER AND A REFERRAL HOSPITAL



University Hospital partners:

AP-HP (Lariboisière, Bichat, Robert-Debré), the Centre Hospitalier

National d'Ophtalmologie des Quinze-Vingts.



Agreements of medical complementarity in ophthalmology and neuroscience:

Institut Curie, Hôpital Foch, HU Pitié Salpêtrière Charles Foix, GH Diaconesses Croix Saint-Simon, CH intercommunal André Grégoire, CH Robert Ballanger, CH de Gonesse, GH de Territoire Plaine de France St-Denis Gonesse, GH intercommunal Le Raincy-Montfermeil.



Non profit partnerships

to improve the quality of care for patients and their families,

to promote care and research activities, and to develop humanitarian cooperation and development activities.

EXTERNAL CENTRES



A territorial coverage

The Adolphe de Rothschild Foundation Hospital is deploying external centers:

- Edmond de Rothschild Health Centers :
 - Laumière Site
 - Bauchat-Nation Site
- Institut Laser Vision
- Centre Médical Argentine

COORDINATED PATIENT PATHS THROUGHOUT THE TERRITORY



Synergie Soins Paris Est: a regional hospital grouping between 5 establishments

Rothschild Foundation Hospital,

GH Diaconesses Croix Saint-Simon, Œuvre de la Croix Saint-Simon Foundation, Rothschild Foundation, Fondation Diaconesses de Reuilly.

The Rothschild Foundation Hospital participates in regional

experiments to coordinate telemedicine care for chronic and elderly patients (TERRe-Santé).

Agreements with several local SRH and Nursing homes institutions

have been signed to ensure the continuity of patient care pathways.



A STRONG INTERNATIONAL COMMITMENT

MEDICAL CARE FOR INTERNATIONAL PATIENTS

The Rothschild Foundation Hospital offers:

- A complete medical expertise;
- Dedicated contact points for administrative and logistical formalities;
- Direct and quick links with the health care teams and comprehensive care.

More than 45 nationalities welcomed through this system.

Email: international@for.paris

Tel.: +33 1 4803 6300

HOSPITAL-UNIVERSITY COOPERATION

- Hosting practitioners from around the world;
- Training of Rothschild Foundation Hospital doctors abroad (fellowship programs);
- Cooperation in clinical research (multicentric protocols, database sharing, etc.).

These include partnerships with UCLA (Los Angeles), the Jules-Gonin Ophthalmic Hospital (Lausanne) and the Cheikh Zaïd University Hospital (Rabat).

HUMANITARIAN COMMITMENTS

True to its values of humanism, transmission and commitment, the Rothschild Foundation Hospital implements several development programs, in Mali, Cameroon and Rwanda among others.



Transmit, innovate and commit to Rothschild Foundation Hospital



Give us your support

The Rothschild Foundation Hospital, a private health institution of collective interest recognized as a public utility, has been authorized to receive donations and legacies since 1909.

The generosity of the public and corporate sponsors is an essential support and a real accelerator of progress, giving doctors and researchers at the Rothschild Foundation Hospital the means to innovate in care and, research; and to improve patients quality of life within the hospital.

..... www.for.paris | dons@for.paris



ROTHSCHILD FOUNDATION
HOSPITAL
HEAD AND NECK EXPERTISE

29, rue Manin 75 019 Paris, FRANCE - contact@for.paris